



Government of India
Ministry of Earth Sciences
India Meteorological Department



Press Release

Date: 25th July, 2025

Time of Issue: 1330 hours IST

Subject: i) Under the influence of Depression over coastal West Bengal and adjoining areas of Northwest Bay of Bengal & Bangladesh, extremely heavy rainfall likely over Odisha, Jharkhand, Gangetic West Bengal on 25th; Vidarbha, Chhattisgarh, Konkan, ghat areas of Madhya Maharashtra on 25th & 26th; West Madhya Pradesh on 26th & 27th; East Madhya Pradesh on 26th and East Rajasthan on 27th July.
ii) Monsoon conditions are likely to be in active phase over central & east India and along the west coast & adjoining ghat areas during next 4-5 days.

Realised weather during past 24 hours till 0830 hours IST of today, the 25th July, 2025:

- ❖ **Extremely heavy falls (≥ 21 cm)** has been recorded at isolated places over ghat areas of Madhya Maharashtra.
- ❖ **Heavy to very heavy rainfall (7-20 cm)** has been recorded at isolated places over Konkan, Coastal & South Interior Karnataka, Gangetic West Bengal, East Madhya Pradesh, Chhattisgarh, Odisha, Bihar, Assam; **Heavy rainfall (7-11 cm)** at isolated places over East Rajasthan, West Uttar Pradesh, West Madhya Pradesh, Jharkhand, Vidarbha, Goa, Tamil Nadu, Kerala and Telangana.

For more details of realised weather, kindly refer [Annexure I](#).

i. Weather Systems, Forecast and Warnings (refer to [Annexure II & III](#)):

- ❖ The Western end of monsoon trough runs north of its normal position and eastern end runs near its normal position at mean sea level.
- ❖ The Low Pressure area over north Bay of Bengal moved west-northwestwards and lay as a well marked low pressure area over the same region at 1730 hrs IST of yesterday, the 24th July and it concentrated into a **Depression** at 0530 hrs IST of today over Northwest Bay of Bengal and adjoining areas of coastal West Bengal and Bangladesh and crossed West Bengal & adjoining Bangladesh coasts between 0730 and 0830 hrs IST of today 25th July 2025, and lay centred over coastal West Bengal and adjoining areas of Northwest Bay of Bengal & Bangladesh. It is very likely to continue to move west-northwestwards across Gangetic West Bengal and adjoining North Odisha and Jharkhand during next 24 hours.
- ❖ A trough runs from north Haryana to the cyclonic circulation associated with Depression in lower tropospheric levels.
- ❖ An upper air cyclonic circulation lies over north Chhattisgarh and a trough runs from northeast Arabian sea to above cyclonic circulation over north Chhattisgarh & neighbourhood in middle tropospheric levels.
- ❖ An off-shore trough at sea level runs along Maharashtra-Kerala coasts.
- ❖ A Western Disturbance as a cyclonic circulation lies over Jammu & Kashmir and neighbourhood in lower & middle tropospheric levels.

Under the influence of these systems, the following weather is likely:

East & Central India:

- ✓ **Extremely heavy rainfall** is very likely at isolated places over Odisha, Jharkhand, Gangetic West Bengal on 25th; Vidarbha, Chhattisgarh on 25th & 26th; West Madhya Pradesh on 26th & 27th; East Madhya Pradesh on 26th July.
- ✓ Isolated **heavy to very heavy rainfall** very likely to continue over Madhya Pradesh, Vidarbha, Chhattisgarh, Odisha, Gangetic West Bengal, Jharkhand during 25th-30th, Bihar on 25th July; isolated **heavy rainfall** over Sub-Himalayan West Bengal & Sikkim during 25th-28th and Bihar during 25th-30th July.

- ✓ Light to moderate rainfall at most places accompanied with thunderstorm, lightning & gusty winds (speed reaching 30-40 Kmph) likely over the region during next 7 days with **moderate lightning over Bihar on 25th July**.

South Peninsular India:

- ✓ **Extremely heavy rainfall** is very likely at isolated places over Coastal Karnataka on 25th July.
- ✓ Isolated **heavy to very heavy rainfall** likely over Kerala & Mahe, Coastal Karnataka during 25th-29th; South Interior Karnataka during 25th-27th; isolated **heavy rainfall** over Tamil Nadu, North Interior Karnataka during 25th-27th; Telangana, Coastal Andhra Pradesh & Yanam on 25th & 26th July with isolated **very heavy rainfall** over north Interior Karnataka on 25th and Tamil Nadu on 26th July.
- ✓ **Strong surface winds** (speed reaching 40-50 kmph) very likely over South Peninsular India during next 5 days.
- ✓ Light to moderate rainfall at most/many places over Kerala & Mahe, Lakshadweep, Karnataka, Rayalaseema, Coastal Andhra Pradesh & Yanam and Telangana during next 7 days.

West India:

- ✓ **Extremely heavy rainfall** very likely at isolated places over Konkan and Ghat areas of Madhya Maharashtra on 25th & 26th July.
- ✓ **Heavy to very heavy rainfall** likely at isolated to some places over Konkan & Goa, Ghat areas of Madhya Maharashtra, Gujarat region during 25th-29th July and **heavy rainfall** over Marathawada on 25th & 26th; Saurashtra & Kutch during 26th-29th July with isolated **very heavy rainfall** over Marathawada on 26th July.
- ✓ Light to moderate rainfall at many places very likely over the region during next 6-7 days.

Northwest India:

- ✓ **Extremely heavy rainfall** very likely at isolated places over East Rajasthan on 27th July.
- ✓ Isolated **very heavy rainfall over East Uttar Pradesh on 25th; East Rajasthan on 26th, 28th & 29th; Uttarakhand on 27th & 28th and West Uttar Pradesh on 28th July.**
- ✓ Isolated **heavy rainfall** likely over Jammu and Kashmir during 29th-31st; Himachal Pradesh, Uttarakhand, East Rajasthan, Uttar Pradesh during 25th-31st; Haryana during 27th-29th and West Rajasthan during 27th-30th July.
- ✓ Light/moderate rainfall at many places accompanied with thunderstorm, lightning likely over Western Himalayan region and some places over the plains during next 7 days.

Northeast India:

- ✓ Light/moderate rainfall at many places accompanied with **thunderstorm, lightning and isolated heavy rainfall** likely to continue over Northeast India during next 4 days with **very heavy rainfall** over Arunachal Pradesh, Meghalaya on 26th & 27th; Mizoram & Tripura on 26th July.

Fishermen Warnings:

Fishermen are advised to avoid venturing into the following from 25th July to 30th July 2025 to the following Areas:

- **Arabian Sea:** Along and off Gujarat, Konkan, Goa, Karnataka, Kerala coasts and adjoining sea area during 25th to 29th July; over Lakshadweep, Maldives, Comorin areas, many parts of southeast, eastcentral, northeast Arabian Sea & some parts of southwest, few parts of westcentral Arabian Sea; along and off the Somalia coast and adjoining sea areas, south Oman and adjoining Yemen coast & adjoining sea areas during 25th to 30th July.
- **Bay of Bengal:** most parts of South Bay of Bengal, central and north Bay of Bengal along and off Tamil Nadu coast during 25th to 28th July; Andhra Pradesh, Odisha, Gangetic West Bengal, Bangladesh, Myanmar coasts, Gulf of Mannar during 25th to 30th July; many parts of south Bay of Bengal for 29th July; some parts south Bay of Bengal during 28th July; Entire Andaman Sea during 25th to 27th July; north Andaman Sea during 27th to 29th July.

ii. Weather conditions and forecast over Delhi/NCR during 25th to 28th July, 2025 (Annexure IV)

For more details, kindly refer National Weather Bulletin:

https://mausam.imd.gov.in/responsive/all_india_forecast_bulletin.php

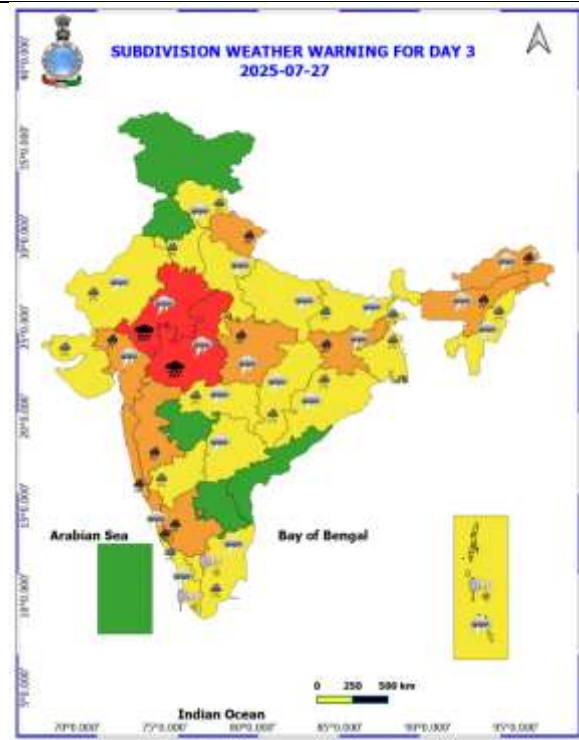
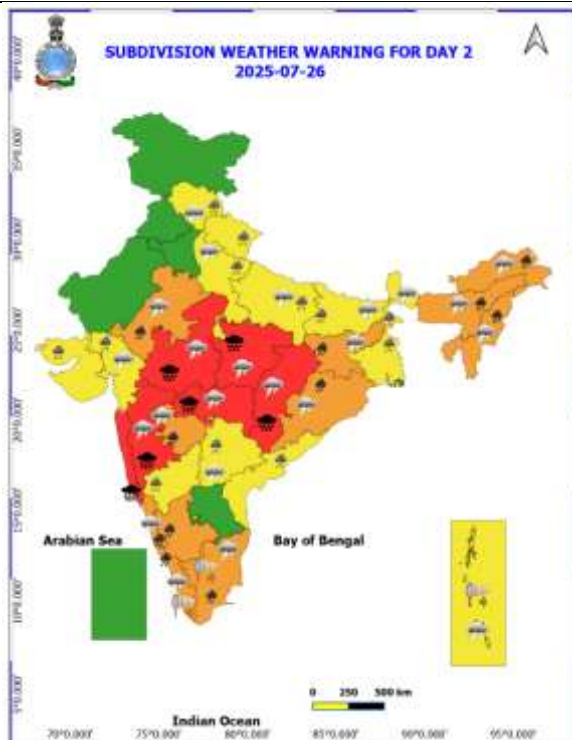
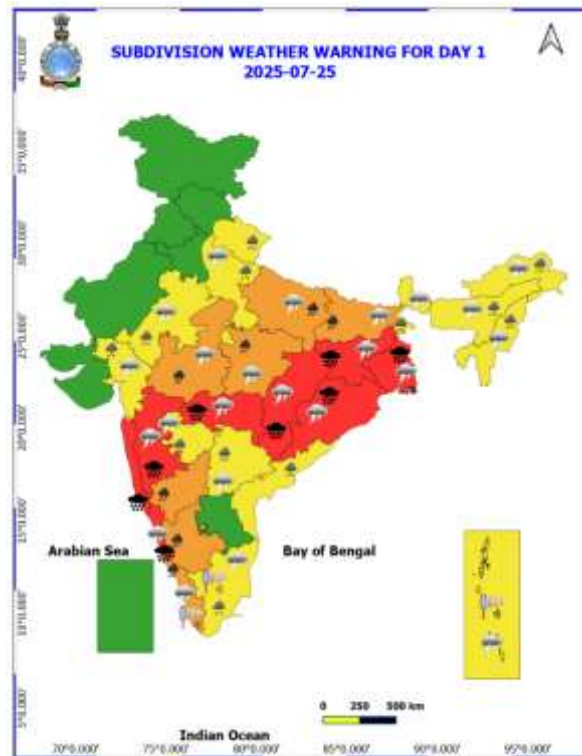
For District wise warnings refer: <https://mausam.imd.gov.in/responsive/districtWiseWarningGIS.php>

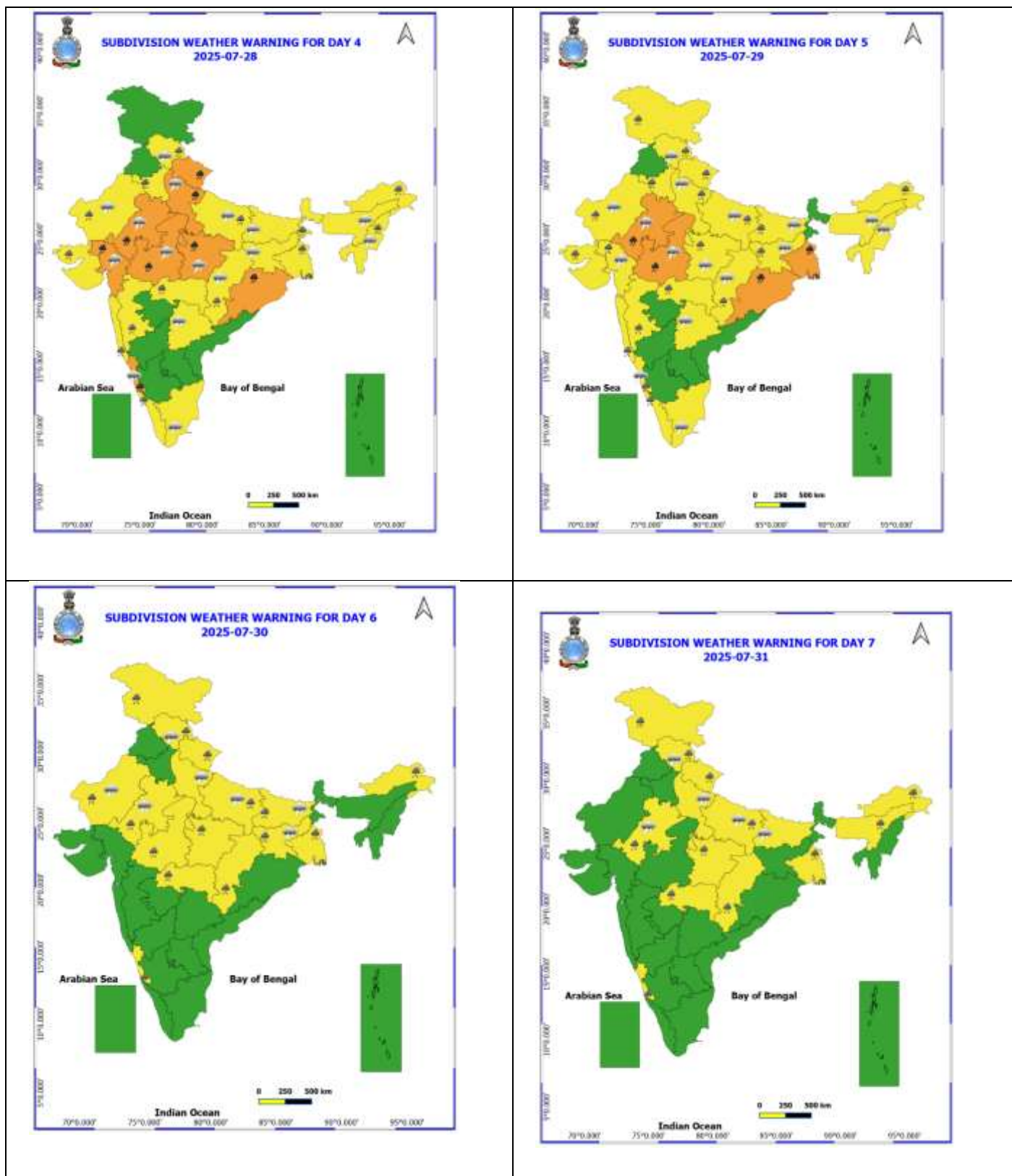
Rainfall recorded (in cm) during past 24 hours till 0830 hours IST of today, the 25th July:

- ❖ **East Madhya Pradesh:** Mada (dist Singrauli) 18; Patharia (dist Damoh) 9; Orchha (dist Niwari), Kesli (dist Sagar), Bina (dist Sagar) 8 Each; Patan (dist Jabalpur), Rahatgarh (dist Sagar) 7 Each;
- ❖ **Coastal Karnataka:** Manki (dist Uttara Kannada) 17; Gersoppa (dist Uttara Kannada) 14; Mulki (dist Dakshina Kannada), Castle Rock (dist Uttara Kannada), Honavar (dist Uttara Kannada) 13 Each; Mudubidre (dist Dakshina Kannada), Siddapura (dist Udupi) 12 Each; Kumta (dist Uttara Kannada) 11; Shirali PTO (dist Uttara Kannada) 10; Mani (dist Dakshina Kannada), Ankola (dist Uttara Kannada), Dharmasthala (dist Dakshina Kannada), Sulya (dist Dakshina Kannada), Puttur HMS (dist Dakshina Kannada) 9 Each; Gokarna (dist Uttara Kannada), Kadra (dist Uttara Kannada) 8 Each; Karwar (dist Uttara Kannada) 7;
- ❖ **South Interior Karnataka:** Agumbe AWS (dist Shivamogga) 15; Bhagamandala (dist Kodagu) 13; Kottigehara (dist Chikkamagaluru) 10; Kammardi (dist Chikkamagaluru) 9; Sringeri HMS (dist Chikkamagaluru), Kalasa (dist Chikkamagaluru), Somwarpet (dist Kodagu), Napoklu (dist Kodagu), Koppa (dist Chikkamagaluru) 7 Each;
- ❖ **Chhattisgarh:** Raghunath Nagar (dist Balrampur), Mukdega (dist Raigarh) 15 Each; Sukma (dist Sukma), Barpali (dist Korba) 14 Each; Poudi Uparora (dist Korba), Bade Bachel (dist Dantewada) 13 Each; **Biharpur** (dist Surajpur), Kutaru (dist Bijapur) 12 Each; Dantewara (dist Dantewada), Janjgir (dist Janjgir), Wandrafanagar (dist Balrampur), Seovrinarayan (dist Janjgir), Baloda (dist Janjgir), Dharamjaigarh (dist Raigarh), Doura Kochali (dist Balrampur), Pasaan (dist Korba), Bhothiya (dist Sakti) 10 Each; Champa (dist Janjgir), Bijapur (dist Bijapur), Bilaigarh (dist Sarangarh Bilaigarh), Darbha (dist Bastar), Bhairamgarh (dist Bijapur), Orcha (dist Narayanpur), Navagarh (dist Janjgir), Bamhnidih (dist Janjgir) 9 Each; Balrampur (dist Balrampur), Kuakonda (dist Dantewada), Pamgarh (dist Janjgir), Jaijaipur (dist Sakti), Baramkela (dist Sarangarh Bilaigarh), Chhindgarh (dist Sukma), Bhaisma (dist Korba), Saragaon (dist Janjgir), Pondi Bachra (dist Koriya), Bhatgaon (dist Sarangarh Bilaigarh), Adbhar (dist Sakti), Chhotedongar (dist Narayanpur), Gangalur (dist Bijapur) 8 Each; Sakti (dist Sakti), Katghora (dist Korba), Manendragarh (dist Manendragarh Bharatpur), Gharghoda (dist Raigarh), Sarangarh (dist Sarangarh Bilaigarh), Lohandiguda (dist Bastar), Bastanar (dist Bastar), Marwahi (dist Gaurela Pendra Marwahi), Akaltara (dist Janjgir), Gidhori Tundra (dist Baloda Bazar), Kukdur (dist Kabirdham) 7 Each;
- ❖ **Madhya Maharashtra:** Lonavala ARG (dist Pune) 15; Mahabaleshwar (dist Satara) 14; Gaganbawada (dist Kolhapur) 7;
- ❖ **Konkan & Goa:** Matheran (dist Raigad) 14; Karjat ARG (dist Raigad), Poladpur (dist Raigad) 12 Each; Mangaon (dist Raigad) 10; Khed (dist Ratnagiri), Chiplun (dist Ratnagiri), Pen (dist Raigad), Savarde-arg (dist Ratnagiri) 9 Each; Canacona (dist South Goa), Mahad (dist Raigad), Dapoli ARG (dist Ratnagiri), Wakwali ARG (dist Ratnagiri) 8 Each; Panvel ARG (dist Raigad), Sanguem (dist South Goa), Mandangad (dist Ratnagiri), Khalapur (dist Raigad) 7 Each;
- ❖ **Gangetic West Bengal:** Mo Saltlake (dist North 24 Parganas) 13; Alipore (dist Kolkata) 8; Dum Dum (dist North 24 Parganas) 7;
- ❖ **Odisha:** Kotpad (dist Koraput) 13, Chitrakunda K Guma (dist Malkangiri) 12, Kuchinda (dist Sambalpur) 11, Hatadihi (dist Keonjhar) 11, Lephripara (dist Sundargarh) 11, Banaigarh (dist Sundargarh) 10, Bonth (dist Bhadrak) 10, Agalpur (dist Bolangir) 10, Pallahara (dist Angul) 10, Malkangiri (dist Malkangiri) 9, Tensa (dist Sundargarh) 9, Telkoi (dist Keonjhar) 9, Sundargarh (dist Sundargarh) 9, Kirmira (dist Jharsuguda) 9, Khairamal (dist Boudhgarh) 9, Tiring (dist Mayurbhanj) 9, Lathikata (dist Sundargarh) 9, Salebhatta (dist Bolangir) 8, Soro (dist Balasore) 8, Ullunda (dist Sonepur) 8, Gurundia (dist Sundargarh) 8, Korukunda (dist Malkangiri) 7, Tangarpali (dist Sundargarh) 7, Jhumpura (dist Keonjhar) 7, Mathili (dist Malkangiri) 7,
- ❖ **Vidarbha:** Bhamragad (dist Gadchiroli) 11; Ballarpur (dist Chandrapur), Ahiri (dist Gadchiroli) 8 Each; Armori (dist Gadchiroli), Etapalli (dist Gadchiroli) 7 Each;
- ❖ **Assam & Meghalaya:** Bhaghmara (dist South Garo Hills) 11; Bijni ARG (dist Chirang) 8;
- ❖ **Kerala & Mahe:** Munnar Kseb (dist Idukki) 10; Tellichery (dist Cannur), Panathur AWS (dist Kasargod) 9 Each; Ottapalam (dist Palakkad), Kannur (dist Cannur), Karipur Ap. (dist Malappuram), Idukki (dist Idukki), Kannur Airport AWS (dist Cannur), Chittur (dist Palakkad), Ams Kannur (dist Cannur) 7 Each;
- ❖ **Tamil Nadu, Puducherry & Karaikal:** Avalanche (dist Nilgiris) 10; Chinnakalar (dist Coimbatore) 8; Valparai PTO (dist Coimbatore), Upasi Tea Research AWS (dist Coimbatore), Upper Bhavani (dist Nilgiris), Cincona (dist Coimbatore), Nalumukku (dist Tirunelveli), Oothu (dist Tirunelveli) 7 Each;
- ❖ **West Madhya Pradesh:** Bhitwar (dist Gwalior) 10; Mungaoli (dist Ashoknagar), Gwalior (dist Gwalior), Chinor (dist Gwalior) 9 Each; Chanderi (dist Ashoknagar), Alipur(jaura) (dist Morena) 8 Each; Dabra (dist Gwalior), Salwani (dist Raisen), Sironj (dist Vidisha) 7 Each;
- ❖ **West Uttar Pradesh:** Tundla (dist Firozabad) 10; Jasrana (dist Firozabad) 9;
- ❖ **Bihar:** Lalganj (dist Vaishali) 8; Taibpur (dist Kishanganj) 7;
- ❖ **East Rajasthan:** Dholpur Tehsil SR (dist Dholpur) 7;
- ❖ **Telangana:** Bejjur (dist Kumaram Bheem) 7.

Table-1								
7 Days Rainfall Forecast								
S.No.	Subdivision	25- Jul	26- Jul	27- Jul	28- Jul	29- Jul	30- Jul	31- Jul
		Day 1	Day 2	Day 3	Day 4	Day 5	Day 6	Day 7
1	ANDAMAN & NICOBAR ISLANDS	FWS	FWS	FWS	SCT	FWS	FWS	WS
2	ARUNACHAL PRADESH	FWS	WS	WS	SCT	SCT	SCT	FWS
3	ASSAM & MEHGHALAYA	FWS	WS	WS	FWS	FWS	SCT	SCT
4	NAGALAND, MANIPUR, MIZORAM AND TRIPURA	WS	WS	FWS	FWS	SCT	SCT	SCT
5	SUB HIMALAYAN WEST BENGAL & SIKKIM	WS	FWS	WS	WS	WS	WS	WS
6	GANGETIC WEST BENGAL	WS	WS	FWS	WS	WS	WS	FWS
7	ODISHA	WS	WS	FWS	FWS	WS	FWS	FWS
8	JHARKHAND	WS	WS	FWS	FWS	WS	WS	WS
9	BIHAR	WS	FWS	SCT	SCT	FWS	SCT	SCT
10	EAST UTTAR PRADESH	FWS	ISOL	ISOL	SCT	SCT	SCT	FWS
11	WEST UTTAR PRADESH	SCT	SCT	SCT	FWS	SCT	SCT	SCT
12	UTTARAKHAND	FWS	FWS	WS	WS	WS	FWS	FWS
13	HARYANA, CHANDIGARH & DELHI	ISOL	ISOL	FWS	FWS	FWS	SCT	SCT
14	PUNJAB	ISOL	ISOL	SCT	SCT	SCT	SCT	SCT
15	HIMACHAL PRADESH	SCT	FWS	WS	WS	WS	FWS	FWS
16	JAMMU AND KASHMIR AND LADAKH	SCT	SCT	SCT	SCT	FWS	FWS	FWS
17	WEST RAJASTHAN	ISOL	ISOL	ISOL	SCT	SCT	SCT	SCT
18	EAST RAJASTHAN	SCT	FWS	FWS	WS	FWS	FWS	FWS
19	WEST MADHYA PRADESH	WS	WS	WS	WS	WS	WS	FWS
20	EAST MADHYA PRADESH	WS	WS	WS	WS	WS	WS	FWS
21	GUJRAT REGION	FWS	FWS	WS	WS	WS	FWS	FWS
22	SAURASHTRA & KUTCH	SCT	FWS	WS	WS	WS	FWS	FWS
23	KONKAN & GOA	WS	WS	WS	WS	WS	WS	WS
24	MADHYA MAHARASHTRA	FWS	WS	SCT	SCT	SCT	ISOL	ISOL
25	MARATHWADA	FWS	WS	FWS	SCT	ISOL	ISOL	ISOL
26	VIDARBHA	WS	WS	WS	FWS	FWS	FWS	WS
27	CHHATTISGARH	WS	WS	FWS	FWS	FWS	FWS	FWS
28	COASTAL ANDHRA PRADESH	WS	FWS	SCT	SCT	ISOL	ISOL	ISOL
29	TELANGANA	WS	FWS	SCT	ISOL	ISOL	ISOL	ISOL
30	RAYALASEEMA	SCT	SCT	SCT	ISOL	ISOL	ISOL	ISOL
31	TAMILNADU & PUDUCHERRY	ISOL	ISOL	ISOL	ISOL	ISOL	ISOL	ISOL
32	COSTAL KARNATAKA	WS	WS	WS	WS	WS	WS	WS
33	NORTH INTERIOR KARNATAKA	WS	FWS	FWS	SCT	SCT	SCT	SCT
34	SOUTH INTERIOR KARNATAKA	WS	WS	FWS	SCT	SCT	SCT	SCT
35	KERALA AND MAHE	WS	WS	WS	WS	WS	FWS	FWS
36	LAKSHADWEEP	WS	WS	WS	WS	FWS	FWS	FWS

- As the lead period increases forecast accuracy decrease.





- Action may be taken based on ORANGE AND REDCOLOUR warnings.
- Vulnerable regions likely urban and hilly areas action may be initiated for heavy rainfall warning.
- As the lead period increases forecast accuracy decreases.

Detailed districtwise Multi Hazard weather warning for next five days available at <https://mausam.imd.gov.in/responsive/districtWiseWarningGIS.php>

Weather forecast over Delhi/NCR during 25th to 28th July 2025**Past Weather:**

There has been rise in the minimum temperature up to 2 - 3°C and rise in maximum temperature up to 4-6°C over Delhi/NCR during the past 24 hours. The maximum and minimum temperatures over Delhi were around 35 to 36°C and 27 to 28°C respectively. The minimum temperature was near normal and the maximum temperature was above normal up to 1-2°C. Partly cloudy sky conditions with predominant surface wind from the southwest direction with wind speeds up to 16 kmph prevailed during the past 24 hours. Partly cloudy sky conditions with a windspeed of less than 20 kmph from the southwest direction prevailed over the region in the forenoon today.

Weather Forecast:

25.07.2025: Partly cloudy sky. Very light to light rain accompanied with thunderstorms/lightning. The maximum temperatures over Delhi are likely to be in the range of 36 to 38°C. The maximum temperature will be above normal up to 1 to 3°C. The predominant surface wind will likely be from the northwest direction with a wind speed of 15-20 kmph in the afternoon. The wind speed will gradually decrease to 10-15 kmph from the west direction during evening and night.

26.07.2025: Partly cloudy sky. Very light to light rain accompanied with thunderstorms/lightning. The maximum and minimum temperatures over Delhi are likely to be in the range of 34 to 36°C and 27 to 29°C respectively. The minimum temperature will be above normal up to 1 to 2°C and the maximum temperature will be near normal. The predominant surface wind will likely be from the west direction with a wind speed of less than 05-10 kmph during the morning hours. The wind speed will gradually increase becoming 10-15 kmph from the northwest direction in the afternoon. It will decrease becoming less than 10 kmph from the northwest direction during the evening and night.

27.07.2025: Generally cloudy sky. Very light to light rain accompanied with thunderstorms/lightning. The maximum and minimum temperatures over Delhi are likely to be in the range of 33 to 35°C and 26 to 28°C respectively. The minimum temperature will be near normal and the maximum temperature will be below normal up to 1 to 2°C. The predominant surface wind will likely be from the southwest direction with a wind speed of less than 10 kmph during the morning hours. The wind speed will remain less than 15 kmph from the northwest direction in the afternoon. It will decrease becoming less than 10 kmph from the west direction during the evening and night.

28.07.2025: Generally cloudy sky. Very light to light rain accompanied with thunderstorm/lightning. The maximum and minimum temperatures over Delhi are likely to be in the range of 31 to 33°C and 26 to 28°C respectively. The minimum temperature will be near normal and the maximum temperature will be below normal up to 2 to 4°C. The predominant surface wind will likely be from the west direction with a wind speed of less than 20 kmph during the morning hours. The wind speed will gradually decrease becoming less than 15 kmph from the southwest direction in the afternoon. It will decrease becoming less than 12 kmph from the southeast direction during the evening and night.

Impact expected and Action Suggested due to light to moderate rainfall with thunderstorm/lightning:

- Be cautious and take precautionary measures, though there is the likelihood of thunderstorms/lightning.
- Damage to standing crops, Minor to major damage to power and communication lines due to breaking of branches, Partial damage to vulnerable structures due to strong winds, Loose objects may fly.
- People are advised to keep a watch on the weather for worsening conditions and be ready to move to safer places accordingly, stay indoors, close windows & doors and avoid travel if possible, take safe shelters; do not take shelter under trees, do not lie on concrete floors and do not lean against concrete walls, unplug electrical/ electronic appliances, immediately get out of water bodies, keep away from all the objects that conduct electricity.

Impact & Action Suggested due to

- ✓ **Extremely heavy rainfall** is very likely at isolated places over Odisha, Jharkhand, Gangetic West Bengal, Coastal Karnataka on 25th; Vidarbha, Chhattisgarh, Konkan and Ghat areas of Madhya Maharashtra on 25th & 26th; West Madhya Pradesh on 26th & 27th; East Madhya Pradesh on 26th and over East Rajasthan on 27th July
- ✓ Isolated **very heavy rainfall** likely over Kerala & Mahe, Coastal Karnataka, Madhya Pradesh during 25th-29th; Marathwada, Tamil Nadu, Mizoram & Tripura, Jharkhand, Odisha on 26th July. north Interior Karnataka on 25th and on 26th; East Rajasthan on 26th, 28th & 29th; Uttarakhand on 27th & 28th and West Uttar Pradesh on 28th and Arunachal Pradesh, Meghalaya on 26th & 27th July.
- ✓

Impact Expected

- Localized Flooding of roads, water logging in low lying areas and closure of underpasses mainly in urban areas of the above region.
- Occasional reduction in visibility due to heavy rainfall.
- Disruption of traffic in major cities due to water logging in roads leading to increased travel time.
- Minor damage to kutcha roads.
- Possibilities of damage to vulnerable structure.
- Localized Landslides/Mudslides/landslips/mudslips/landsinks/mudsinks.
- Damage to horticulture and standing crops in some areas due to inundation.
- It may lead to riverine flooding in some river catchments (for riverine flooding please visit Web page of CWC)

Action Suggested

- Check for traffic congestion on your route before leaving for your destination.
- Follow any traffic advisories that are issued in this regard.
- Avoid going to areas that face the water logging problems often.
- Avoid staying in vulnerable structure.

Agromet advisories for likely impact of Heavy / Heavy to Very Heavy Rainfall

- In **Telangana**, postpone sowing of rice nurseries in **Southern Telangana** and transplanting of rice in **Northern Telangana**. Ensure proper drainage facilities from the fields of paddy, maize, groundnut, cotton, soybean, red gram and vegetables.
- In **Maharashtra**, make arrangement to drain out excess water from paddy and finger millet nurseries, groundnut, vegetables and orchards in **Konkan** and rice and finger millet nurseries in **ghat areas of Madhya Maharashtra**. Provide adequate drainage facilities in fields of soybean, cotton, pigeon pea, sorghum, maize, green gram, black gram and turmeric in **Vidarbha**.
- **Madhya Pradesh**, provide adequate drainage from the fields of soybean, rice, maize, pigeon pea and jowar in **Vindhyan Plateau Zone**; from paddy, soybean, maize, urad and sesame in **Kyomore Plateau and Satpura Hill Zone**; from soybean, paddy, pigeon pea, and corn in **Bundelkhand Zone**; from maize, soybean, cotton, and paddy (rice) in **Satpura Plateau Zone**; and from paddy, soybean, maize, jowar, bajra, and vegetables in **Central Narmada Zone**.
- In **Chhattisgarh**, drain out excess water from rice nurseries, soybean, red gram, green gram, black gram, sugarcane and vegetables in **Plain Zone**. In **Northern Hill Zone**, postpone fresh transplanting of rice in low lands. Drain out excess water from transplanted rice and vegetables. Undertake staking / propping in banana and papaya. In **Bastar Plateau Zone**, drain out excess water from rice, minor millets, maize, pulses and oilseeds.
- In **Gangetic West Bengal**, arrange good drainage system for vegetable seed bed and standing vegetable crops and betel vine garden in **Coastal Saline Zone**. In **Laterite and Red Soil Zone** postpone transplanting of rice during the heavy rainfall periods. Drain out excess water from already sown groundnut and vegetables.
- In **Odisha**, postpone sowing of maize and drain out excess water from paddy nurseries and fields of transplanted rice, maize, pulses, vegetable and plantation crops in **North Central Plateau Zone**. Drain out excess water from the fields of paddy, sugarcane, finger millet, groundnut, French bean, plantations and vegetables in **Mid Central Table Land Zone**; paddy, jute, sugarcane, vegetable and papaya in **North Eastern coastal plain Zone**; paddy, cotton, arhar, banana and vegetables crops in **Western undulating zone**.
- In South **Jharkhand**, maintain proper drainage in fields of paddy, maize, and pulses like pigeon pea, moong and urad.

- In **Uttarakhand**, maintain proper drainage channels in fields of rice in **Bhabar and Tarai Zone** and black gram in **Hill Zone**. Make necessary arrangements to drain out excess water from barnyard millet, finger millet, cucumber and rice fields in **Sub Humid SubTropic Zone**.
- In **Kerala**, provide adequate drainage in fields of paddy, coconut, banana and ginger. Postpone nursery / transplanting of rice. Provide staking in vegetables.
- In **Karnataka**, postpone nursery sowing of rice and provide drainage in arecanut fields and banana orchards in **Coastal Zone**. In **Hill Zone**, make arrangements to drain out excess water from rice nurseries, fields of maize, cotton, ginger and plantations of arecanut. In **Southern Transition Zone**, provide proper drainage in arecanut and coconut fields. In **Southern Dry Zone**, provide staking / support to maize, tomato and banana crop. Ensure proper drainage to prevent waterlogging especially in rice, vegetables and spice crops. Cover young seedlings in rice nurseries and vegetables with coverings like plastic sheets or agro-shade nets.
- In **Coastal Andhra Pradesh**, ensure proper drainage channels in fields of maize and direct seeded rice in **Krishna Godavari Zone**.

Livestock / Fishery

- Keep the animals inside the shed during heavy rainfall and provide them balanced feed.
- Store feed and fodder in a safe place to prevent spoilage.
- Construct an outlet with proper netting around the ponds to drain out excess water, thereby preventing fish from escaping in case of overflow.

Agromet advisories for likely impact of Thunderstorm / Gusty Winds / Squally Winds

- Provide mechanical support to horticultural crops and staking or support to vegetables and young fruit plants / fruit-bearing plants to avoid lodging due to strong winds.

Flash flood guidance:

24 hours Outlook for the Flash Flood Risk (FFR) till 1130 IST of 26-07-2025 :

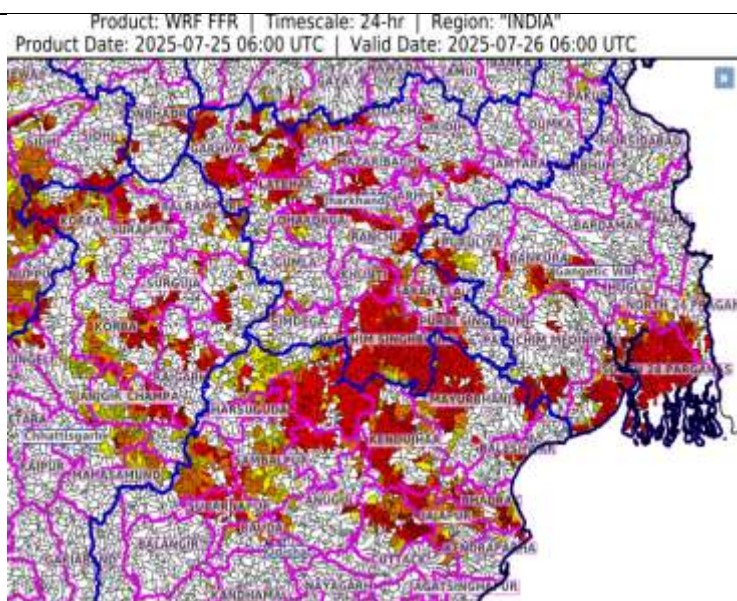
Moderate to High flash flood risk likely over few watersheds & neighbourhoods of following Met Sub-divisions during next 24 hours.

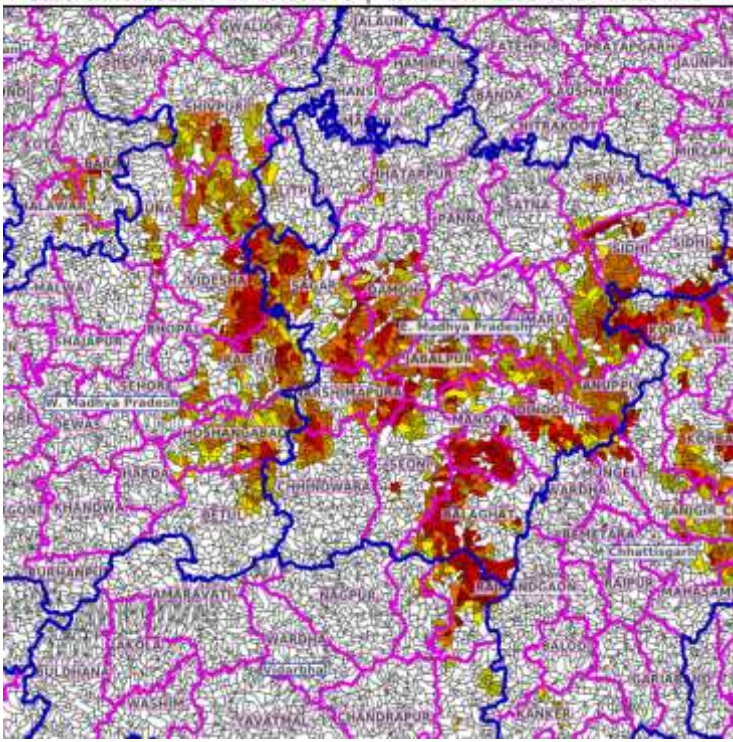
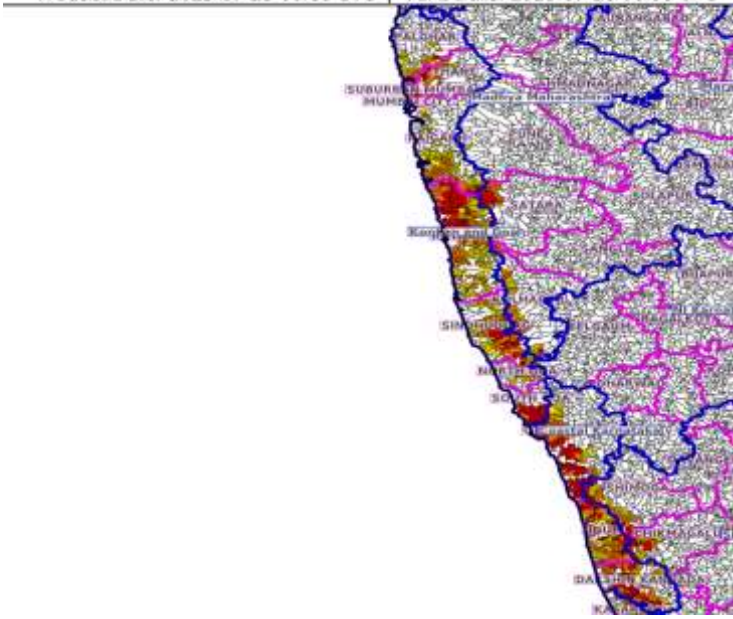
Chhattisgarh - Balarampur, Baloda Bazar, Bilaspur, Durg, Gariaband, Janjgir_Champa, Jashpur, Kanker, Kondagaon, Korba, Korea, Mahasamund, Mungeli, Raigarh, Surajpur and Surguja districts.

Odisha - Anugul, Balangir, Baleshwar, Baragarh, Bhadrak, Deogarh, Jajapur, Jharsuguda, Kendujhar, Kendraparha, Dhenkanal, Jajapur, Mayurbhanj, Sambalpur, Subarnapur and Sundargarh districts.

Gangetic West Bengal - Eastmednipur, Haora, Hugli, Bankura, Bardaman, North 24 Pragana, Pashchim Medinipur, Puruliya and South 24 Parganas districts. Jharkhand - Chatra, East Singhbhum, Garhwa, Giridih, Gumla, Khunti, Koderma, Latehar, Lohardaga, Palamu, Ramgarh, Ranchi, Saraikela, Simdega and West Singhbhum districts.

Surface runoff/ Inundation may occur at some fully saturated soils & low-lying areas over Area of Concern (AoC) as shown in map due to expected rainfall occurrence in next 24 hours.



<p>24 hours Outlook for the Flash Flood Risk (FFR) till 1130 IST of 26-07-2025 :</p> <p>Moderate to High flash flood risk likely over few watersheds & neighbourhoods of following Met Sub-divisions during next 24 hours.</p> <p>East Madhya Pradesh - Anuppur, Balaghat, Chhatarpur, Chhindwara, Damoh, Dindori, Jabalpur, Katni, Mandla, Narshimpura, Rewa, Sagar, Seoni, Shahdol, Sidhi, Tikamgarh and Umari districts.</p> <p>Adjoining Vidarbha - Bhandara, Gadchiroli and Gondiya districts.</p> <p>West Madhya Pradesh - Ashoknagar, Betul, Bhopal, Datia, Guna, Narmadapuram, Raisen, Sehore, Shivpuri and Videsha districts.</p> <p>Surface runoff/ Inundation may occur at some fully saturated soils & low-lying areas over Area of Concern (AoC) as shown in map due to expected rainfall occurrence in next 24 hours.</p>	<p>Product: WRF FFR Timescale: 24-hr Region: "INDIA" Product Date: 2025-07-25 06:00 UTC Valid Date: 2025-07-26 06:00 UTC</p> 
<p>24 hours Outlook for the Flash Flood Risk (FFR) till 1130 IST of 26-07-2025 :</p> <p>Moderate to High flash flood risk likely over few watersheds & neighbourhoods of following Met Sub-divisions during next 24 hours.</p> <p>Coastal Karnataka - Dakshin Kannada, Udupi and Uttar Kannada districts.</p> <p>Konkan & Goa - North Goa, South Goa, Mumbai City, Palghar, Raigarh, Ratnagiri, Sindhudurg, Suburban Mumbai and Thane districts.</p> <p>Surface runoff/ Inundation may occur at some fully saturated soils & low-lying areas over Area of Concern (AoC) as shown in map due to expected rainfall occurrence in next 24 hours.</p>	<p>Product: GFS FFR Timescale: 24-hr Region: "INDIA" Product Date: 2025-07-25 06:00 UTC Valid Date: 2025-07-26 06:00 UTC</p> 

Legends & abbreviations:

- ❖ **Heavy Rain:**64.5-115.5mm; **Very Heavy Rain:**115.6-204.4mm; **Extremely Heavy Rain:** >204.4mm.
- ❖ **Obsy:** Observatory; Automatic Weather Station; **ARG:** Automatic Rain Gauge; **dist:** District; **NH:** National Highway; **KVK:** Krishi Vigyan Kendra; **DVC:** Damodar Valley Corporation; **PTO:** Part Time Office, **Aero:** Aerodrome, **IAF:** Indian Air Force.
- ❖ **Region wise classification of meteorological Sub-Divisions:**
 - **Northwest India:** Western Himalayan Region (Jammu-Kashmir-Ladakh-Gilgit-Baltistan-Muzaffarabad, Himachal Pradesh and Uttarakhand); Punjab, Haryana-Chandigarh-Delhi; West Uttar Pradesh, East Uttar Pradesh, West Rajasthan and East Rajasthan.
 - **Central India:** West Madhya Pradesh, East Madhya Pradesh, Vidarbha and Chhattisgarh.
 - **East India:** Bihar, Jharkhand, Sub-Himalayan West Bengal & Sikkim; Gangetic West Bengal, Odisha and Andaman & Nicobar Islands.
 - **Northeast India:** Arunachal Pradesh, Assam & Meghalaya and Nagaland, Manipur, Mizoram & Tripura.
 - **West India:** Gujarat Region, Saurashtra & Kutch, Konkan & Goa, Madhya Maharashtra and Marathawada.
 - **South India:** Coastal Andhra Pradesh & Yanam, Telangana, Rayalaseema, Coastal Karnataka, North Interior Karnataka, South Interior Karnataka, Kerala & Mahe, Tamil Nadu, Puducherry & Karaikal and Lakshadweep.

LEGENDS

1. अंडमान और निकोबार द्वीपसमूह

2. अरुणाचल प्रदेश

3. असम और मेघालय

4. नागालैंड, मणिपुर, मिजोरम और त्रिपुरा

5. उप-हिमालयी पश्चिम बंगाल और सिक्किम

6. गंगीय पश्चिम बंगाल

7. ओडिशा

8. झारखंड

9. बिहार

10. पूर्वी उत्तर प्रदेश

11. पश्चिम उत्तर प्रदेश

12. उत्तराखंड

13. हरियाणा, चंडीगढ़ और दिल्ली

14. पंजाब

15. हिमाचल प्रदेश

16. जम्मू और कश्मीर और लद्दाख

17. पश्चिम राजस्थान

18. पूर्वी राजस्थान

19. पश्चिम मध्य प्रदेश

20. पूर्वी मध्य प्रदेश

21. गुजरात

22. सौराष्ट्र

23. कोंकण और गोवा

24. मध्य महाराष्ट्र

25. मराठवाड़ा

26. विदर्भ

27. छत्तीसगढ़

28. तटीय आंध्र प्रदेश और यनम

29. तेलंगाना

30. रायलसीमा

31. तमिलनाडु, पुडुचेरी और कराईकल

32. तटीय कर्नाटक

33. आंतरिक उत्तरी कर्नाटक

34. आंतरिक दक्षिणी कर्नाटक

35. केरल और माहे

36. लक्षद्वीप



1. Andaman & Nicobar Islands

2. Arunachal Pradesh

3. Assam & Meghalaya

4. Nagaland, Manipur, Mizoram & Tripura

5. Sub-Himalayan West Bengal & Sikkim

6. Gangetic West Bengal

7. Odisha

8. Jharkhand

9. Bihar

10. East Uttar Pradesh

11. West Uttar Pradesh

12. Uttarakhand

13. Haryana, Chandigarh & Delhi

14. Punjab

15. Himachal Pradesh

16. Jammu & Kashmir and Ladakh

17. West Rajasthan

18. East Rajasthan

19. West Madhya Pradesh

20. East Madhya Pradesh

21. Gujarat

22. Saurashtra

23. Konkan & Goa

24. Madhya Maharashtra

25. Marathwada

26. Vidarbha

27. Chhattisgarh

28. Coastal Andhra Pradesh & Yanam

29. Telangana

30. Rayalaseema

31. Tamilnadu, Puducherry & Karaikal

32. Coastal Karnataka

33. North Interior Karnataka

34. South Interior Karnataka

35. Kerala & Mahe

36. Lakshadweep

SPATIAL DISTRIBUTION (% of Stations reporting)

% Stations	Category	% Stations	Category
76-100	Widespread (WS/Most Places)	26-50	Scattered (SCT/A Few Places)
51-75	Fairly Widespread (FWS/Many Places)	1-25	Isolated (ISOL)



Fog



Heavy Snow



Cold Wave



Heavy Rain



Dust Storm



Cold Day



Very Heavy Rain



Heat Wave



Ground Frost



Extremely Heavy Rain



Warm Night



Thunder & Lightning



Hot Day



Hailstorm



Hot & Humid



Dust Raising Winds



Strong Surface Winds

COLOUR CODED WARNING

No Warning (No Action)

Watch (Be Aware)

Alert (Be Prepared To Take Action)

Warning (Take Action)

Probabilistic Forecast

Terms	Probability of Occurrence (%)
Unlikely	< 25
Likely	25 - 50
Very Likely	50 - 75
Most Likely	> 75

* Red colour warning does not mean "Red Alert", Red colour warning means "Take Action".

Forecast and Warning for any day is valid from 0830 hours IST of day till 0830 hours IST of next day.

For more details, kindly visit <https://mausam.imd.gov.in> or contact: 011-2434-4599

(Service to the Nation since 1875)

DEFINITION/CRITERIA

Rain/ Snow *

Heavy: 64.5 to 115.5 mm/cm *
Very Heavy: 115.6 to 204.4 mm/cm *
Extremely Heavy: > 204.4 mm/cm *

Heat Wave

When maximum temperature of a station reaches $\geq 40^{\circ}\text{C}$ for plains and $\geq 30^{\circ}\text{C}$ for hilly regions
(a) Based on Departure from normal

Heat Wave: Maximum Temperature Departure from normal 4.5°C to 6.4°C .

Severe Heat Wave: Maximum Temperature Departure from normal $\geq 6.5^{\circ}\text{C}$

(b). Based on Actual maximum temperature

Heat Wave: When actual maximum temperature $\geq 45^{\circ}\text{C}$.

Severe Heat Wave: When actual maximum temperature $\geq 47^{\circ}\text{C}$.

(c). Criteria for heat wave for coastal stations

When maximum temperature departure is $> 4.5^{\circ}\text{C}$ from normal. Heat Wave may be described provided maximum temperature $\geq 37^{\circ}\text{C}$.

Warm Night

When maximum temperature remains 40°C

Warm Night: When minimum temperature departure 4.5°C to 6.4°C .

Severe Warm Night: When minimum temperature departure $> 6.4^{\circ}\text{C}$.

Cold Wave

When minimum temperature of a station $\leq 10^{\circ}\text{C}$ for plains and $\leq 0^{\circ}\text{C}$ for hilly regions.

(a). Based on departure

Cold Wave: Minimum Temperature Departure from normal -4.5°C to -6.4°C .

Severe Cold Wave: Minimum Temperature Departure from normal $\leq -6.5^{\circ}\text{C}$

(b) Based on actual Minimum Temperature (for Plains only)

Cold Wave: When Minimum Temperature is $\leq 4.0^{\circ}\text{C}$

Severe Cold Wave: When Minimum Temperature is $\leq 2.0^{\circ}\text{C}$

(c) For Coastal Stations

When Minimum Temperature departure is $\leq -4.5^{\circ}\text{C}$ & actual Minimum Temperature is $\leq 15^{\circ}\text{C}$

Cold Day

When minimum temperature of a station $\leq 10^{\circ}\text{C}$ for plains and $\leq 0^{\circ}\text{C}$ for hilly regions

Based on departure

Cold Day: Maximum Temperature Departure from normal -4.5°C to -6.4°C .

Severe Cold Day: Maximum Temperature Departure from normal $\leq -6.5^{\circ}\text{C}$

Fog

Phenomenon of small droplets suspended in air and the horizontal visibility $< 1\text{km}$

Moderate Fog: When the visibility between 500-200 metres

Dense Fog: when the visibility between 50- 200 metres

Very Dense Fog: when the visibility < 50 metres

Thunderstorm

Sudden electrical discharges manifested by a flash of light (Lightning) and a sharp rumbling sound (thunder)

Dust/Sand Storm

An ensemble of particles of dust or sand energetically lifted to great heights by a strong and turbulent wind.

Frost

Ice deposits on ground

Air temperature $\leq 4^{\circ}\text{C}$ (over Plains)

Squall

A strong wind that rises suddenly, lasts for atleast 1 minute.

Moderate: Wind speed 52-61 kmph

Severe: Wind speed 62-67 kmph

Very Severe: Wind speed > 67 kmph

Sea State

Effect of various waves in the sea over specific area

Rough to very rough: Wind speed 41-62 kmph (22-33 knots) & Wave height 2.5-6 metre

High to very high: Wind speed 63-117 kmph (34-63 knots) & Wave height 6-14 metre

Phenomenal: Wind speed > 117 kmph (> 63 knots) & Wave height > 14 metre

Cyclone

Cyclonic Storm: Wind speed 62-87 kmph (34-47 knots)

Severe Cyclonic Storm: Wind speed 88-117 kmph (48-63 knots)

Very Severe Cyclonic Storm: Wind speed 118-165 kmph (64 - 89 knots)

Extremely Severe Cyclonic Storm: Wind speed 166-220 kmph (90 -119 knots)

Super Cyclone Storm: Wind speed > 220 kmph (> 119 knots)

* Red colour warning does not mean "Red Alert", Red colour warning means "Take Action".

Forecast and Warning for any day is valid from 0830 hours IST of day till 0830 hours IST of next day.

For more details, kindly visit <https://mausam.imd.gov.in> or contact: 011-2434-4599

(Service to the Nation since 1875)

Hot and Humid: When maximum temperatures remain 3°C above normal along with the above normal relative humidity.